

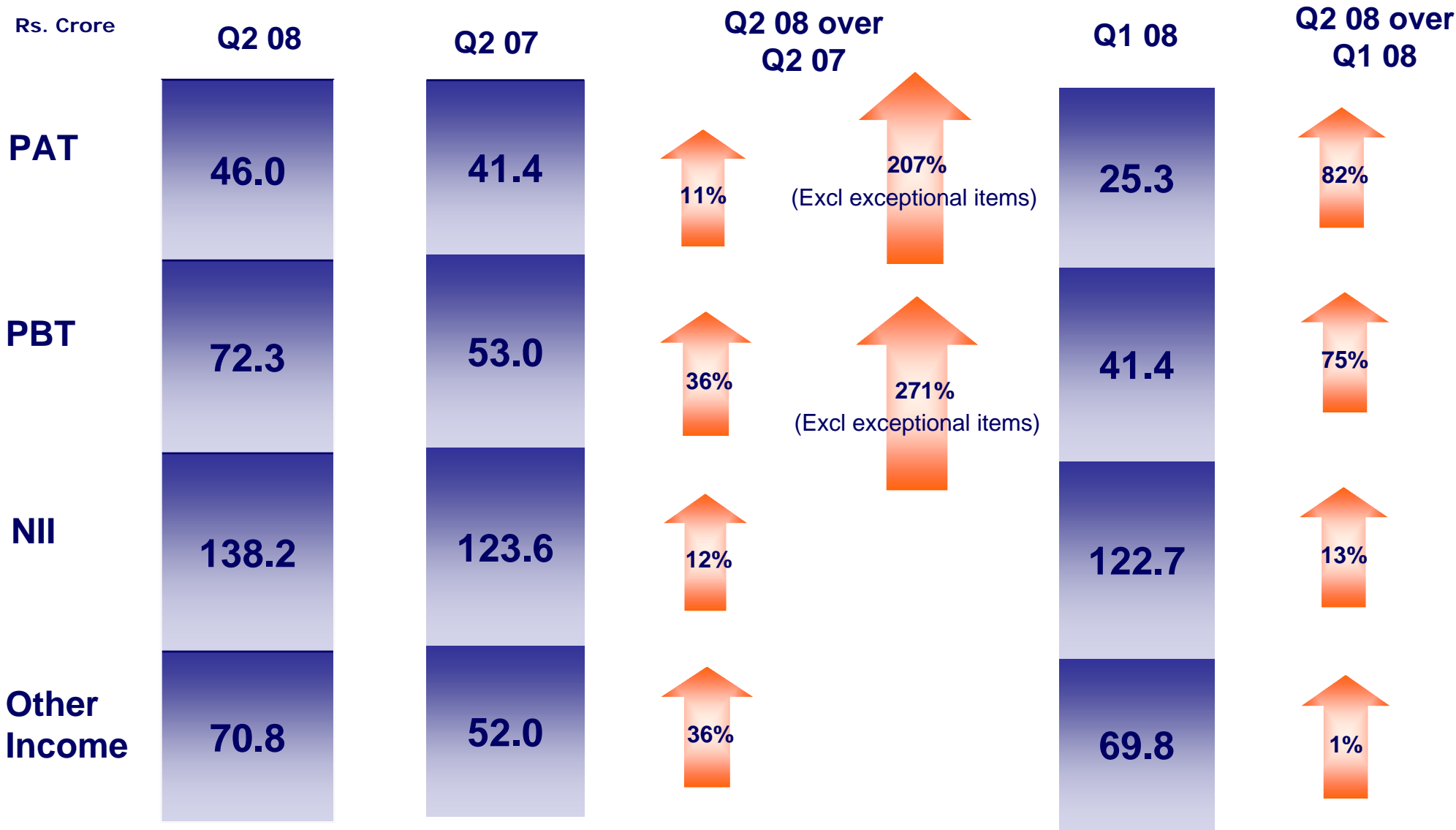
# **Financial results**

## **Second quarter and Half year ended 30 September 2007**

**Investor Presentation**

**25 October 2007**

# Performance highlights



# Performance highlights

Rs. Crore

**HY '08**

**HY '07**

**HY '08 over  
HY '07**

**PAT**

**71.3**

**56.2**

**27%**

**133%**  
(Excl exceptional items)

**PBT**

**113.6**

**76.1**

**49%**

**162%**  
(Excl exceptional items)

**NII**

**260.9**

**233.8**

**12%**

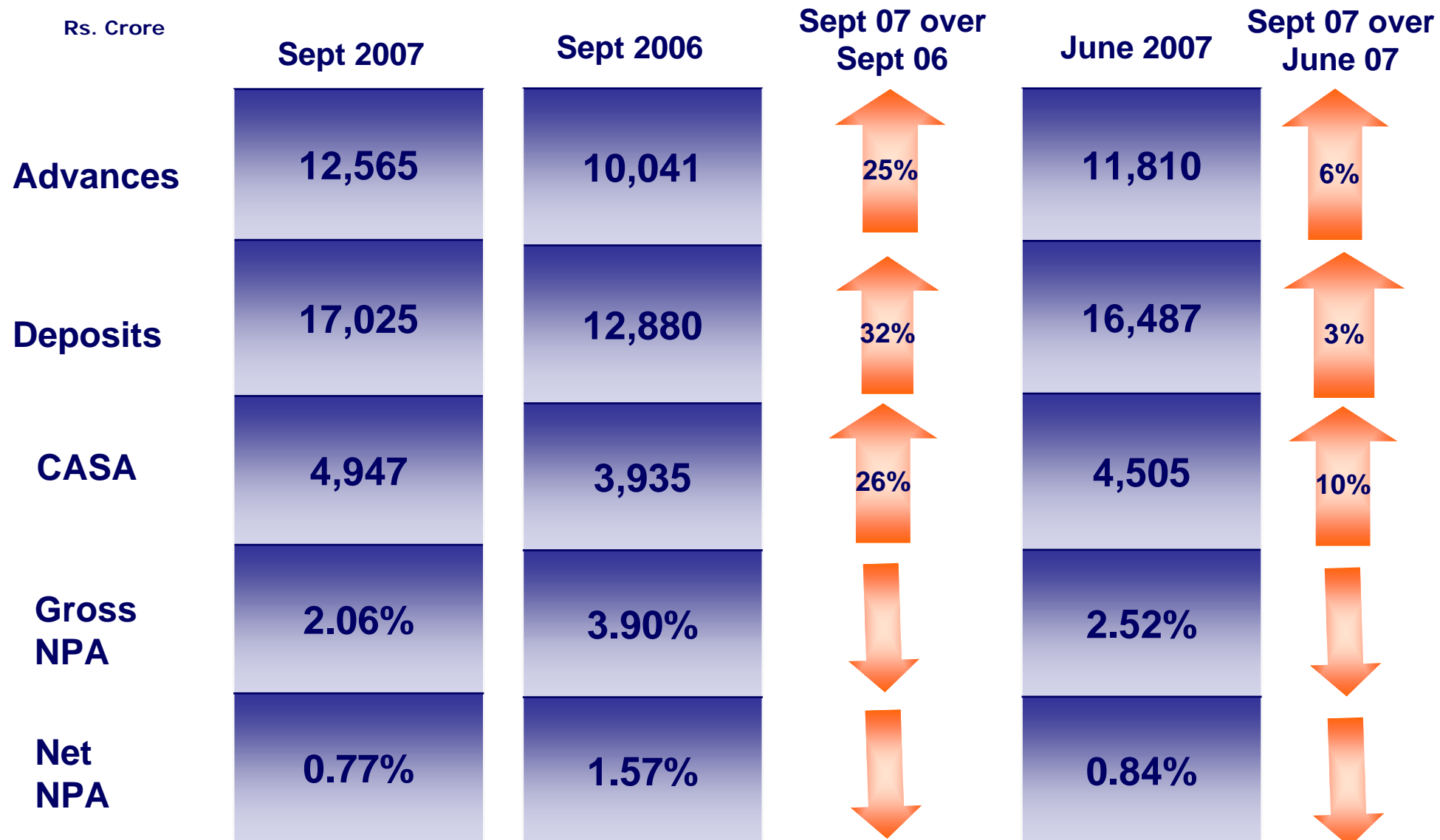
**Other  
Income**

**140.7**

**94.9**

**48%**

# Performance highlights



# Balance Sheet

<i>(In Rs. Crore)</i>	<b>As at 30 Sept 2007</b>	<b>As at 30 Sept 2006</b>	<b>Y/Y %</b>
<b>Capital and Reserves</b>	<b>1,175</b>	<b>1,076</b>	<b>9%</b>
<b>Deposits</b>	<b>17,025</b>	<b>12,880</b>	<b>32%</b>
<b>Borrowings</b>	<b>693</b>	<b>1,131</b>	<b>-39%</b>
<b>Other Liab. &amp; Provisions</b>	<b>2,013</b>	<b>1,646</b>	<b>22%</b>
<b>Total Liabilities</b>	<b>20,906</b>	<b>16,733</b>	<b>25%</b>
<b>Cash, Inter-bank, etc.</b>	<b>1,990</b>	<b>1,463</b>	<b>36%</b>
<b>Investments</b>	<b>5,153</b>	<b>4,209</b>	<b>22%</b>
<b>Advances</b>	<b>12,565</b>	<b>10,041</b>	<b>25%</b>
<b>Fixed and other assets</b>	<b>1,198</b>	<b>1,020</b>	<b>18%</b>
<b>Total Assets</b>	<b>20,906</b>	<b>16,733</b>	<b>25%</b>
<i>(In Rs. Crore)</i>	<b>As at 30 Sept 2007</b>	<b>As at 30 Sept 2006</b>	<b>Y/Y %</b>
CA	2,213	1,565	41%
SA	2,734	2,371	15%
TD	10,152	7,469	36%
CD	1,926	1,475	31%
<b>Total deposits</b>	<b>17,025</b>	<b>12,880</b>	<b>32%</b>
<b>CASA %</b>	<b>29%</b>	<b>31%</b>	<b>26%</b>

# Profit and Loss

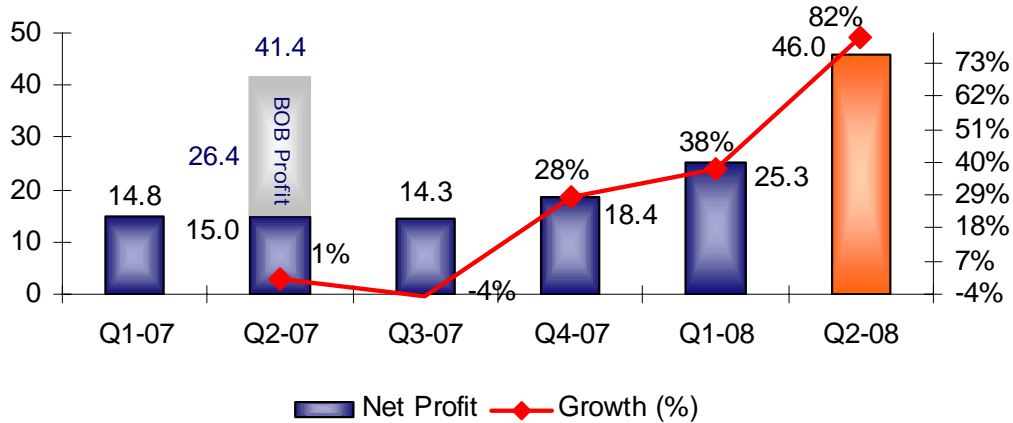
<i>(In Rs. Crore)</i>	YTD- Sept 07	YTD- Sept 06	Growth (%)	Q2 '08	Q2 '07	Q2 '08/ Q2 '07 (%)
Net Interest Income	260.9	233.8	12%	138.2	123.6	12%
Other Income	140.7	94.9	48%	70.8	52.0	36%
<b>Total Income</b>	<b>401.5</b>	<b>328.6</b>	<b>22%</b>	<b>209.0</b>	<b>175.6</b>	<b>19%</b>
Staff expenses	137.3	118.6	-16%	69.3	60.8	-14%
Other expenses	146.5	140.0	-5%	77.2	75.5	-2%
<b>Total Expenses</b>	<b>283.8</b>	<b>258.6</b>	<b>-10%</b>	<b>146.5</b>	<b>136.3</b>	<b>-7%</b>
<b>Operating Profit</b>	<b>117.7</b>	<b>70.0</b>	<b>68%</b>	<b>62.5</b>	<b>39.3</b>	<b>59%</b>
Exceptional Items	2.0	33.5	-94%	-	33.5	-100%
<b>Op Profit after Excep. items</b>	<b>119.7</b>	<b>103.5</b>	<b>16%</b>	<b>62.5</b>	<b>72.8</b>	<b>-14%</b>
Provisions	6.1	27.4	78%	(9.8)	19.8	149%
<b>Profit before tax</b>	<b>113.6</b>	<b>76.1</b>	<b>49%</b>	<b>72.3</b>	<b>53.0</b>	<b>36%</b>
Taxes	42.3	19.9	-112%	26.3	11.6	-127%
<b>Net Profit</b>	<b>71.3</b>	<b>56.2</b>	<b>27%</b>	<b>46.0</b>	<b>41.4</b>	<b>11%</b>

# Key Ratios

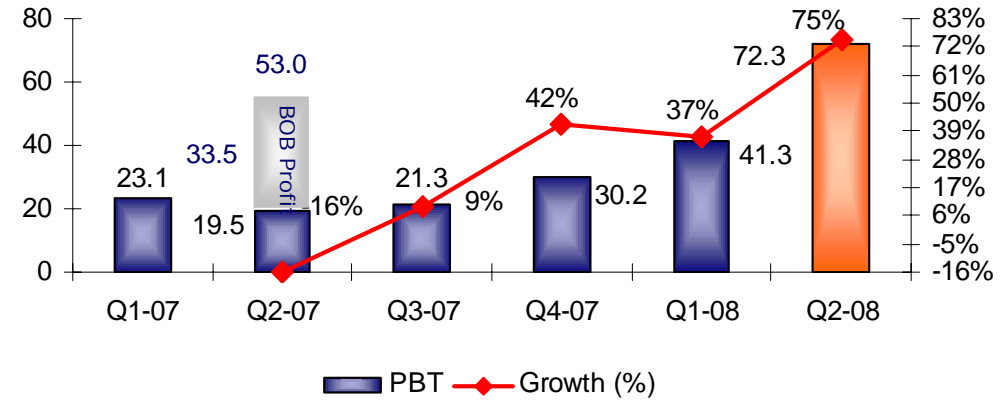
	YTD Sept 2007	YTD Sept 2006	QE Sept 2007	QE Sept 2006
Yield on Advances	10.65%	9.24%	10.52%	9.42%
Cost of Deposits	6.51%	5.07%	6.38%	4.97%
Gross NPA Ratio	2.06%	3.90%	2.06%	3.90%
Net NPA to Net advances	0.77%	1.57%	0.77%	1.57%
Return on Assets	0.71%	0.67%	0.88%	0.97%
Return on Equity	12.48%	10.69%	15.84%	15.56%
Credit-Deposit Ratio	73.80%	77.96%	73.80%	77.96%
Cost Income Ratio	70.67%	78.70%	70.10%	77.63%
Capital Adequacy Ratio	10.51%	11.36%	10.51%	11.36%

# Improving profitability

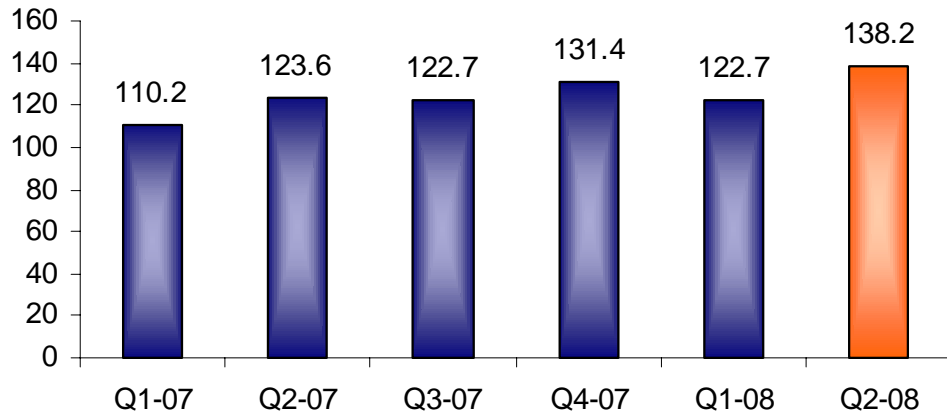
## Net Profit



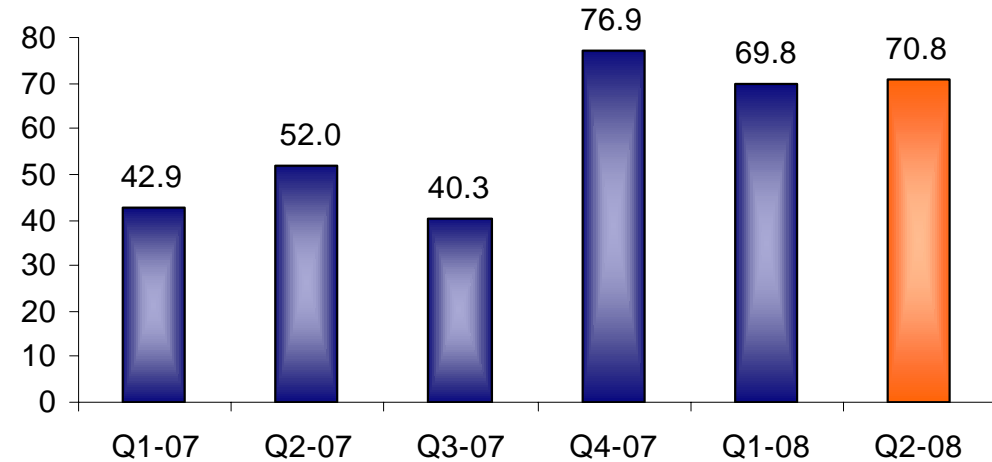
## Profit before tax



## Net Interest Income

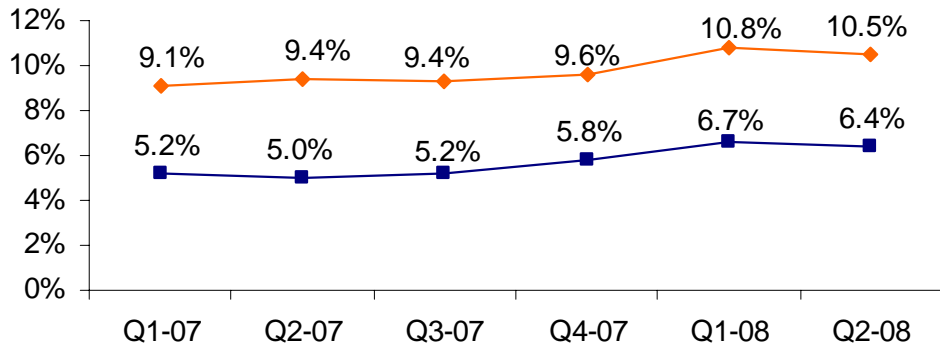


## Other Income



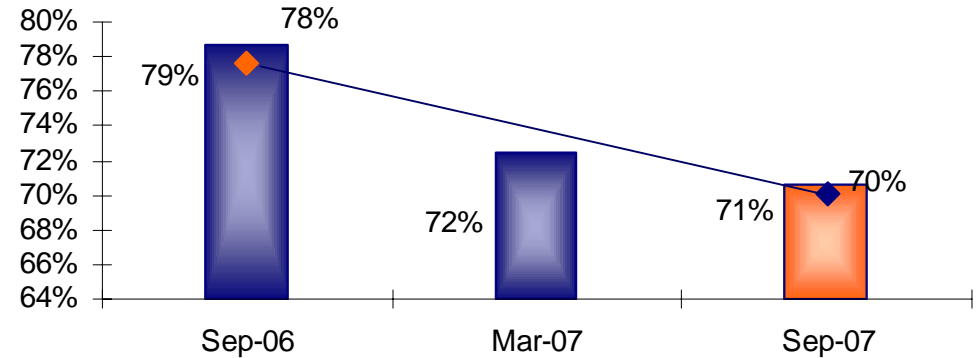
# Improving profitability

## Yield and Cost



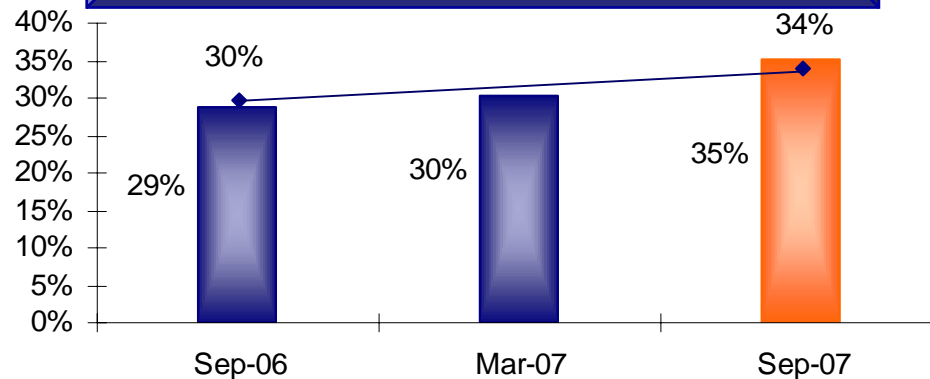
—◆— Yield —■— Cost

## Cost income ratio



■ Cost income ratio-YTD —◆— Cost income ratio-Qtr

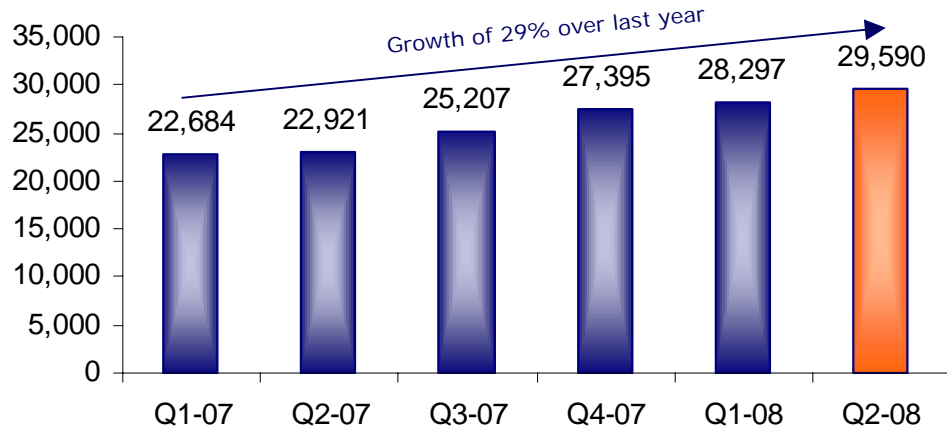
## Other income to Total Income



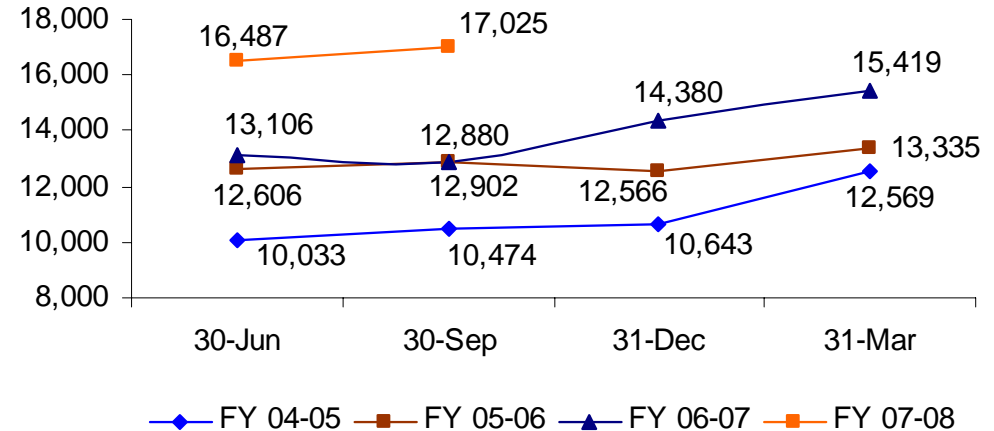
■ YTD —◆— Qtr

# Expanding scale

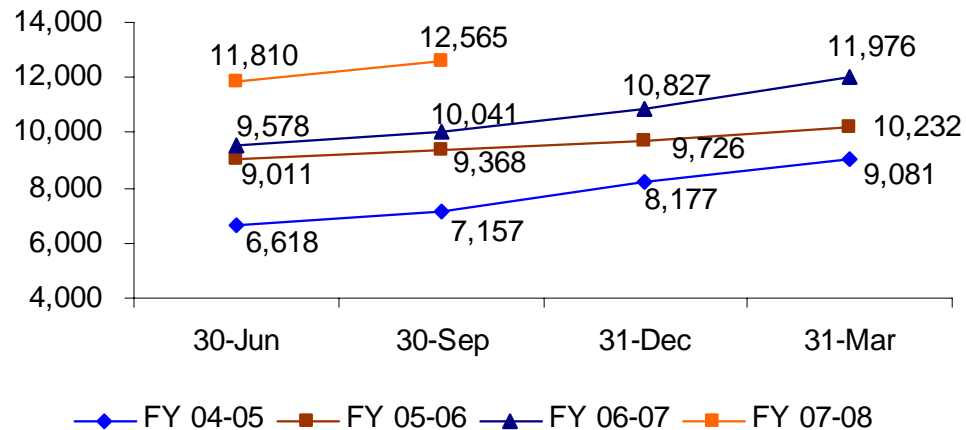
## Growth in Business



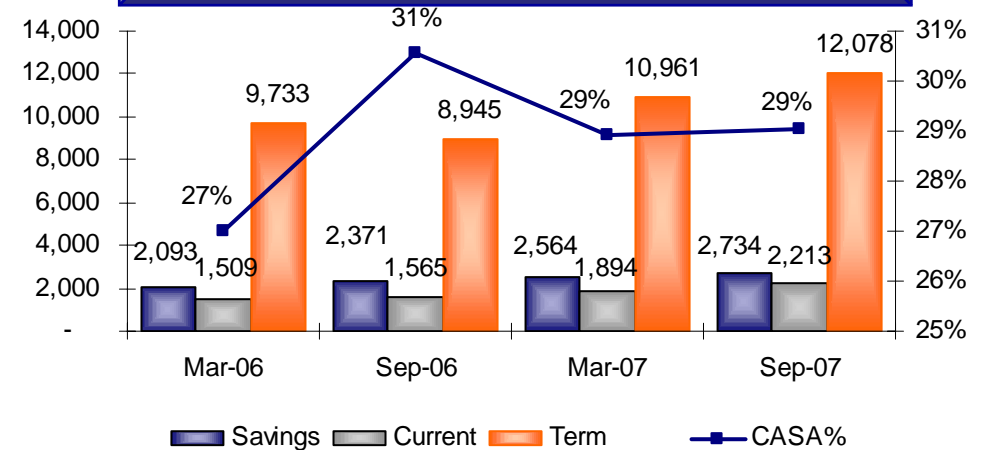
## Growth in Deposits



## Growth in Advances

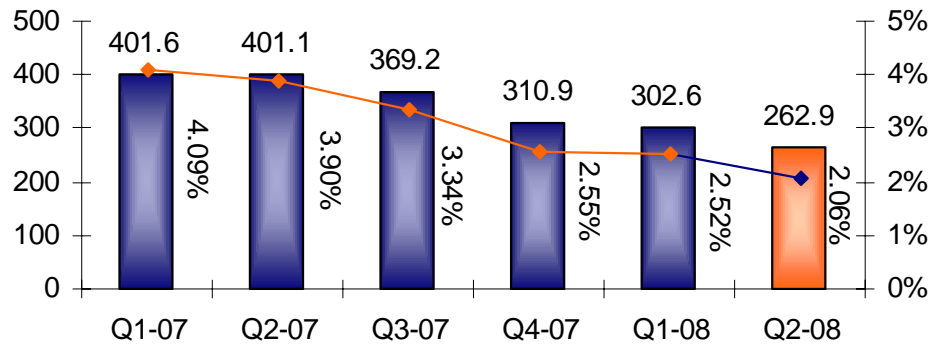


## Growth in CASA



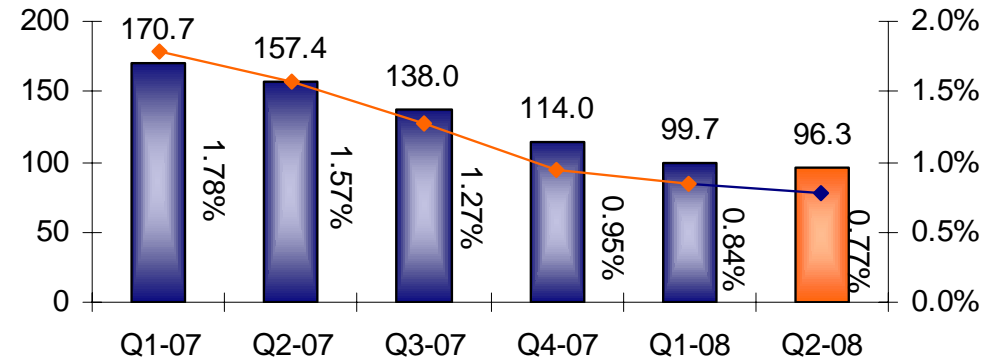
# Improving quality

## Gross NPA



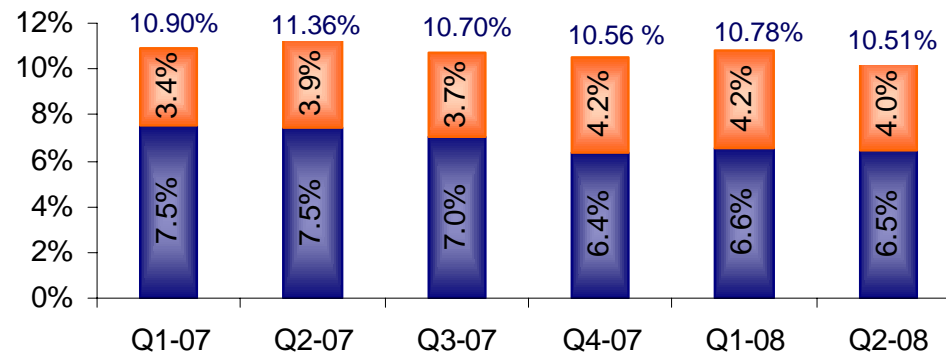
■ Gross NPA ◆ Gross NPA %

## Net NPA



■ Net NPA ◆ Net NPA %

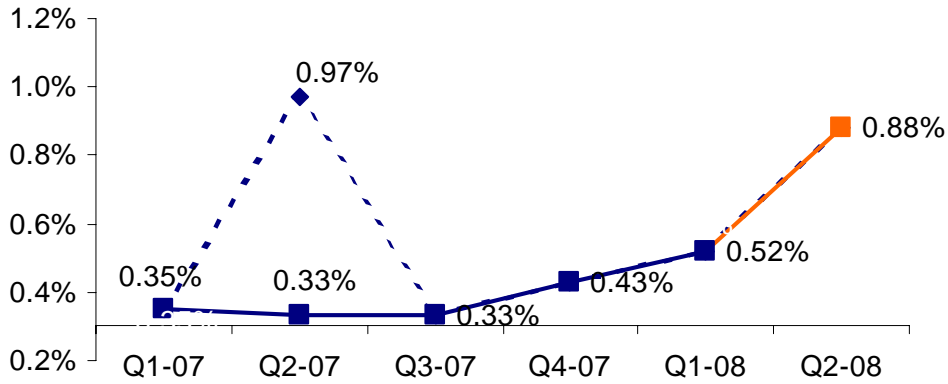
## Capital Adequacy



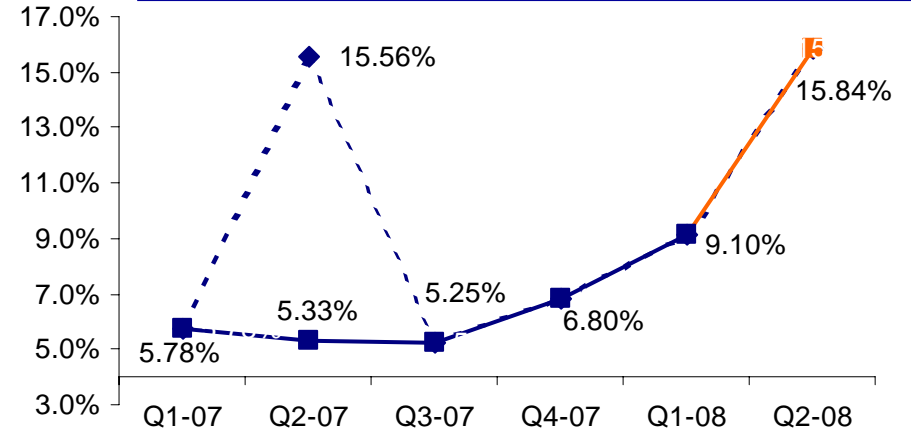
■ Tier I ■ Tier II

# Better earnings

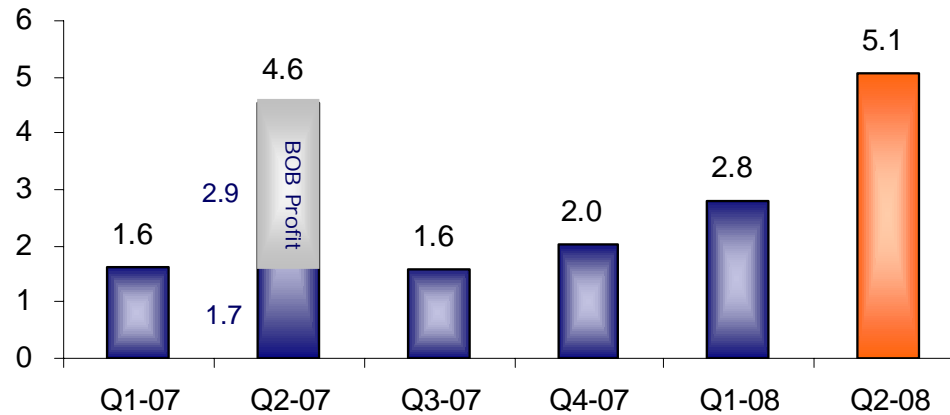
## Return on Assets



## Return on Equity



## Earning per share



---

**ING**  **Vysya**  
**B A N K**